

Machine Tube Luminaire



RL70CE - 136 H

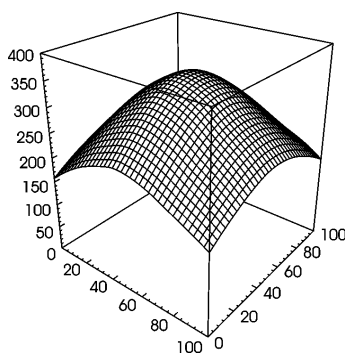
connected load
fitted with

work equipment
mains lead
luminaire body
material
weight (net)
fastening
light distribution
system of protection
class of protection
total length
light output
outside diameter

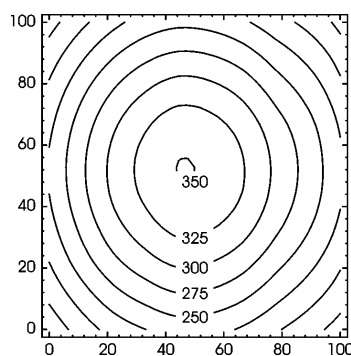
article no.

110/230 V; 50/60 Hz
1 x compact fluorescent lamp TC-L 36 W
neutral white 4000 K
electronic ballast
connecting terminal

borosilicate glass
approx. 1,8 kg (4.0 lbs)
lamp bracket (accessory)
direct
IP 67
I
584 mm (23.0")
395 mm (15.6")
70 mm (2.8")
C with screwed cable gland
619063011



Emin: 157 lx
Em: 256 lx
Emax: 350 lx



measuring conditions: d=100cm

